

WHAT SPACE ARE YOU OBSESSED WITH AND WHY?

VIEWPOINTS



ERICA MUHLENBRUCH, IIDA, LEED AP, SENIOR DESIGNER AT HELIX ARCHITECTURE + DESIGN IN KANSAS CITY, MO.

Recently a friend sent me images for a project called Moomin Valley, based on a series of Finnish children's books. The designer recreated the whimsical sketches and imagination in the books and translated them to spaces for family use. The project looks so innovative, surreal and beautiful. I'd love to see more like it.

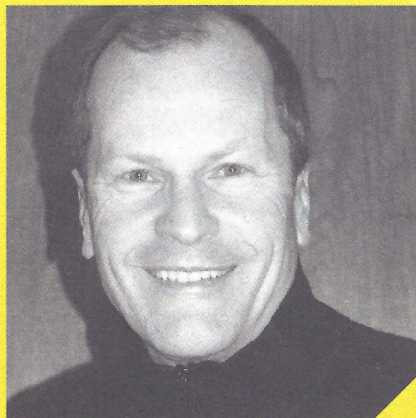
DIANE TAITT CHANDLEUR, IIDA, ASSOCIATE AIA, DIRECTOR OF INTERIOR ARCHITECTURE FOR THE WASHINGTON, D.C., OFFICE OF LEO A DALY

The Sidi Driss Hotel in Matmata, Tunisia. It's an underground circular desert cave dwelling, called a troglodyte. Cool during the summer and warm in winter; my feet in mother earth, and the surreal blue sky, the ceiling. It fills me with a sense of absolute connection, comfort and inspiration to this day.



CHARLES J. UEHRKE, IIDA, PROJECT DIRECTOR, HUNTSMAN ARCHITECTURAL GROUP IN SAN FRANCISCO

For me, the Pantheon in Rome is the most compelling space I've ever experienced. The interior dome is a marvel of engineering, symmetrical restraint and classic form. I have visited it at least six times and never tire of standing beneath the oculus and watching the light change on the coffered span.

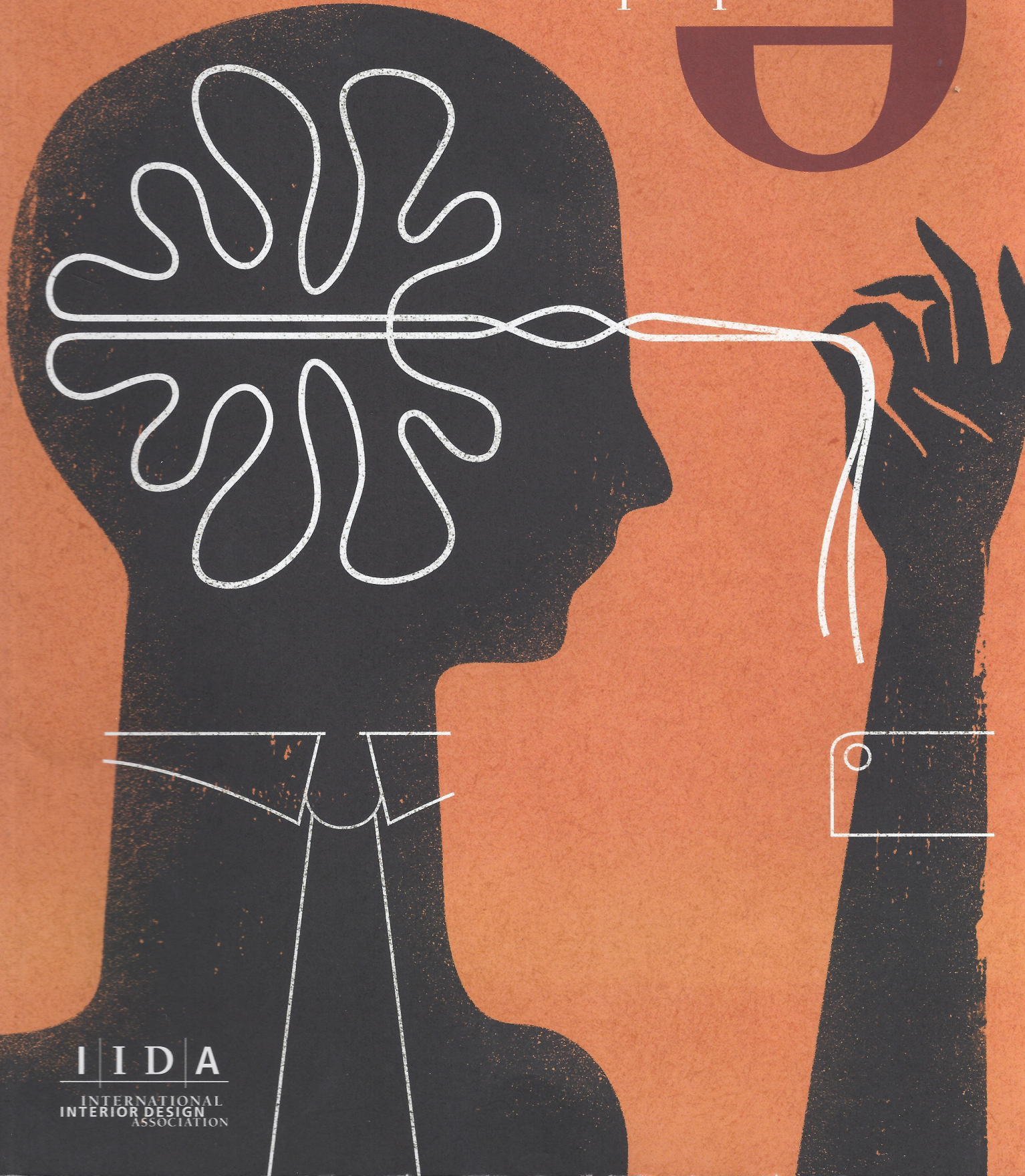


MARC HERNDON, IIDA, ASID, ASSOCIATE INTERIOR DESIGNER AT RNL IN DENVER

I lean towards the contemporary in my day-to-day, but I'm obsessed with Thomas Jefferson's estate, Monticello, in Charlottesville, Va. The neoclassic plan is both restrained and inventive, with lots of angled windows, natural light and well-orchestrated surprises. It's a testament to Jefferson's Renaissance tastes, as well as the true power of design.



perspective



I | I | D | A
INTERNATIONAL
INTERIOR DESIGN
ASSOCIATION